

HAVE YOU SEEN THIS INSECT?

Asian Citrus Psyllid



Eggs tucked inside new citrus flush



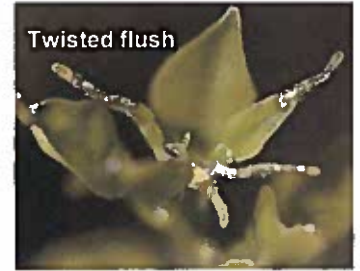
Adult psyllid - 1/8 inch in size



Young stages with waxy tubules



Psyllids infesting a leaf



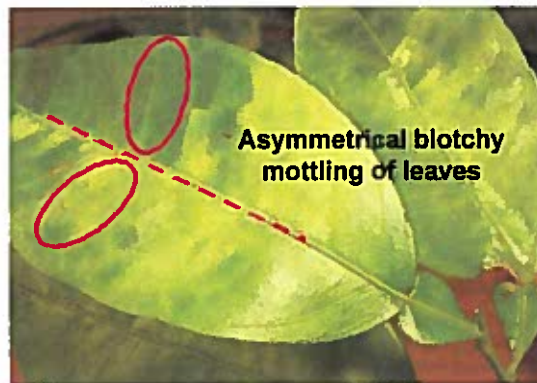
Twisted flush

The Asian citrus psyllid, *Diaphorina citri*, is a small, aphid-like insect. It feeds on the new flush of citrus and very closely related plants such as orange jasmine (*Murraya paniculata*). Psyllid feeding causes burned tips and twisting of the new leaves. More importantly, it can spread the bacterium that causes Huanglongbing (HLB) disease.

HAVE YOU SEEN THIS CITRUS DISEASE? Huanglongbing or Citrus Greening Disease



Lopsided bitter, hard fruit with small dark aborted seeds



Asymmetrical blotchy mottling of leaves



Yellow shoots

Huanglongbing (HLB), also known as citrus greening disease or yellow shoot disease, is a very destructive bacterial disease of citrus and closely related plants. It is spread primarily by psyllid insect vectors and through grafting with infected budwood.

Symptoms include yellow shoots, leaf mottle, small upright leaves, and lopsided fruits with a bitter flavor. Diseased trees are non-productive and must be removed and destroyed to prevent further spread of the disease.

HLB is a serious threat to the California citrus industry.

**IF YOU SUSPECT YOU HAVE SEEN THIS INSECT
OR DISEASE CALL THE CALIFORNIA DEPARTMENT OF FOOD AND
AGRICULTURE HOTLINE: 1-800-491-1899**

*E. Grafton-Cardwell and G. Vidalakis, University of California Riverside
University of California ANR Core Grants Program
Photos by M. Rogers and M. Keremane*